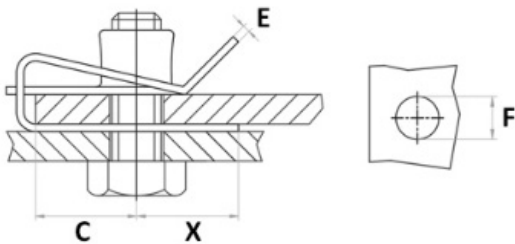


M6 Chimney Nuts

CN3

• Description:	Ideal fasteners for heavy duty applications, ensuring a strong and reliable joint in sheet materials – metal or plastic.
• Finish:	Spring steel
• Nut size:	M6
• Plate size:	21.3x 14.8mm ± 0.2mm
• Panel Thickness:	0.8mm (±0.05mm)
• Finish/Colour:	Zinc Plated



Panel Range	Length (mm)	Width (mm)	C	E	F	X
0.5 - 4	21.3	14.8	10.5	0.8	7	9.8