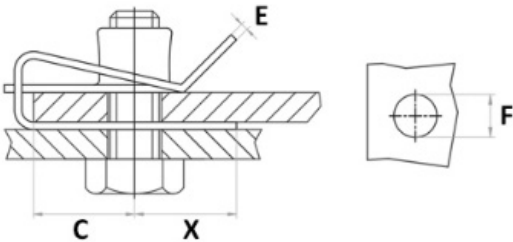


M4 Chimney Nuts

CN1

• Description:	Ideal fasteners for heavy duty applications, ensuring a strong and reliable joint in sheet materials – metal or plastic.
• Finish:	Spring steel
• Nut size:	M4
• Plate size:	14.9 x 10mm ± 0.2mm
• Panel Thickness:	0.6mm (±0.05mm)
• Finish/Colour:	Zinc Plated



Panel Range	Length (mm)	Width (mm)	C	E	F	X
2 - 4	14.9	10	7.3	0.6	6.5	6